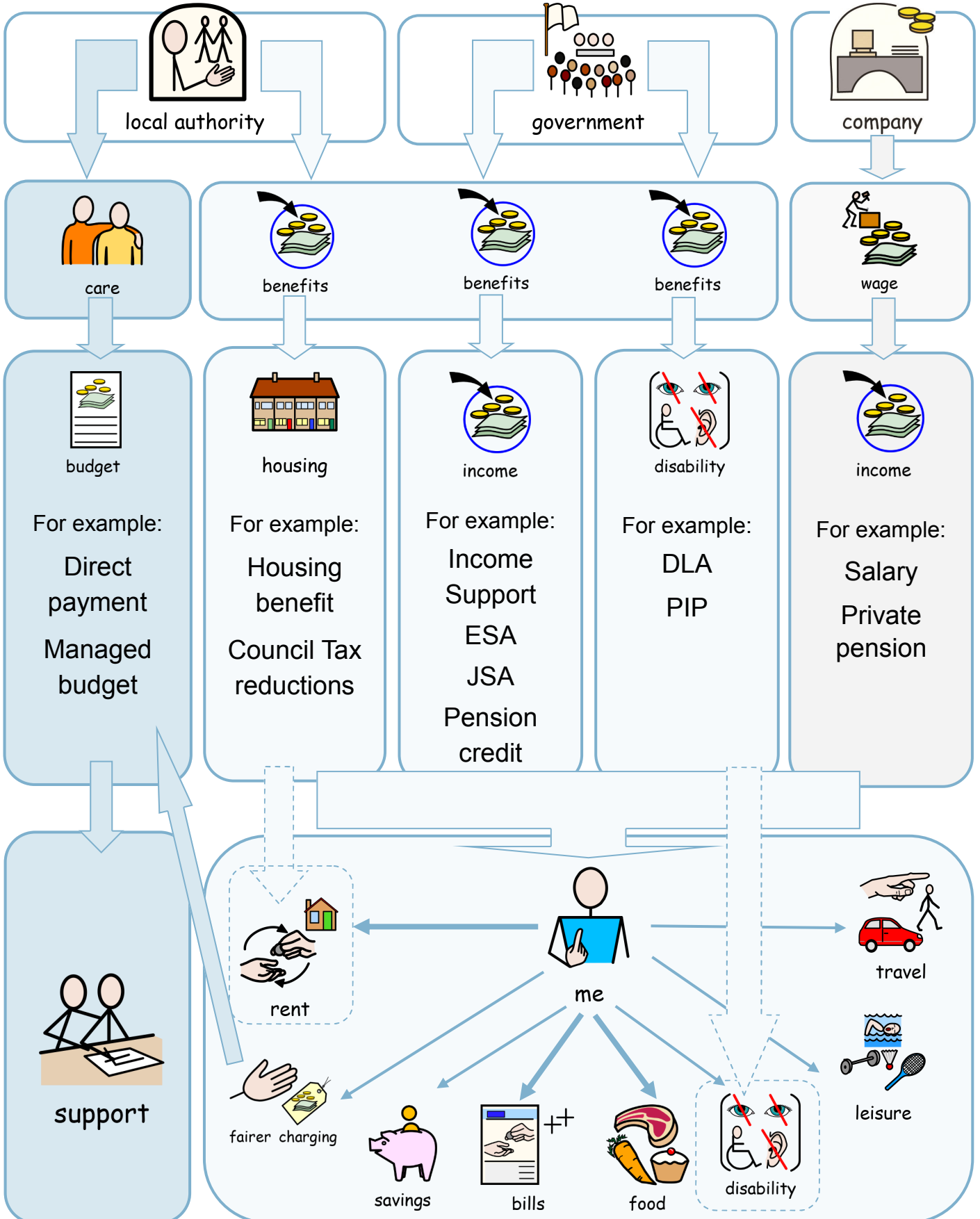
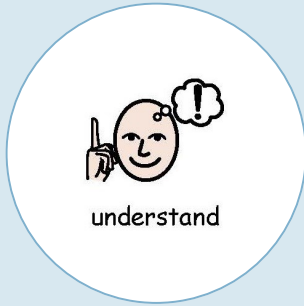


# Family carers managing money series

## Where does the money come from?





## Understanding the words

- Direct payment - getting some or all of your care funding paid to you directly so you can buy your own support.
- Managed budget - the Local Authority or another organisation managing some of your care funding for you and buying your support on your behalf.
- DLA - Disability Living Allowance
- ESA - Employment and Support Allowance
- JSA - Job Seekers' Allowance
- PIP - Personal Independence Payment



## Where can I get more information?

- The main benefits at [www.gov.uk/browse/benefits](http://www.gov.uk/browse/benefits)
- Disability and carers' benefits at [www.gov.uk/browse/disabilities](http://www.gov.uk/browse/disabilities)
- Contact your Local Authority for local benefits and support [www.gov.uk/find-your-local-council](http://www.gov.uk/find-your-local-council)
- You can also speak to your Local Authority social care team for a care needs assessment and to discuss care funding options [www.gov.uk/apply-needs-assessment-social-services](http://www.gov.uk/apply-needs-assessment-social-services)
- If you don't use the internet, you can contact your local carers' centre or call Dosh on 0300 303 1288.